

Solid Waste Dept.

#518-462-9616

#518-462-9617

## CITY OF RENSSELAER

Trash & Recycling pickup guidelines

Jun-23

City Garage

#518-462-5512

### **GARBAGE/RECYCLING PICK UP** (For bill paying customers only)

(TRASH PICK UP IS THE MORNINGS OF TUESDAY - FRIDAY, WE DO NOT PICK UP ON WEEKENDS/HOLIDAYS)

#### **PICK UP SCHEDULE :**

**MONDAY MORNING:** BRUSH/TWIGS, LEAVES, GRASS CLIPPINGS, CHRISTMAS TREES (Place curb side Sunday night)  
**TUESDAY MORNING:** ALL SOUTH OF PARTITION ST (Place garbage curb side Monday night)  
**WEDNESDAY MORNING:** ALL NORTH OF PARTITION ST TO McNAUGHTON AVE (Place garbage curb side Tuesday night)  
**THURSDAY MORNING:** ALL NORTH OF McNAUGHTON AVE TO I-90 (Place garbage curb side Wednesday night)  
**FRIDAY MORNING:** ALL NORTH OF I-90 TO GRANDVIEW ESTATES (Place garbage curb side Thursday night)

**BRUSH :** LEAVES/GRASS CLIPPINGS MUST BE IN PAPER BIODEGRADABLE BAGS. WE WILL NOT PICK UP LEAVES/CLIPPINGS IN PLASTIC BAGS. ALL BRUSH/BRANCHES/TWIGS SHOULD BE NO LONGER THAN 4 FT (NOT OVER 40 LBS) AND MUST BE TIED TOGETHER. CUT DOWN TREES/ LIMBS OR EXTREME LARGE PILES WILL BE CHARGED BASED ON SIZE.

**TRASH:** PLEASE PUT TRASH OUT CURB SIDE THE NIGHT BEFORE PICK UP BETWEEN 4:00 PM and 12:00 PM MIDNIGHT. TRASH MUST BE BAGGED & TIED IN TRASH BAGS (NOT OVER 40 POUNDS) & PLACED IN A 32 GALLON CONTAINER WITH TIGHT LIDS. OVER SIZED TRASH STOPS MAY BE CONSIDERED BULK & CHARGED ACCORDINGLY. TRASH CANS MUST BE RETURNED BACK TO THE PROPERTY WITHIN 24 HOURS. THE CITY GARAGE, LOCATED AT 25 WILLOW STREET, IS **NOT** A DROP OFF STATION.

**RECYCLING:** ALL RECYCLABLES MUST BE IN THE BLUE RECYCLABLE BINS PROVIDED BY THE CITY. (YOUR FIRST BIN IS COMPLIMENTARY; ALL REPLACEMENT BINS WILL NEED TO BE PURCHASED.) RECYCLABLE ITEMS (GLASS/METAL/PLASTIC) MUST BE CLEAN & PLACED LOOSELY IN THE BOTTOM OF THE BLUE BIN. ALL PAPER ITEMS, SUCH AS NEWSPAPERS/MAGAZINES/BOXES SHOULD BE PLACED ON TOP OF THE BLUE BIN. CARD BOARD BOXES MUST BE FLATTENED AND NO LONGER THAN 3 FEET X 2 FEET.

\* IT WILL BE THE HOMEOWNERS RESPONSIBILITY TO INFORM THEIR TENANTS OF THESE TRASH RULES. ALL FEES/FINES STAY WITH THE PROPERTY. VIOLATORS MAY BE CHARGED \$1000.00 FOR UNSIGHTLY LITTERING.

**\*\* FOR BILLING INQUIRIES:** PLEASE CALL THE SOLID WASTE DEPARTMENT AT #518-462-9616 OR #518-462-9617 FOR MORE INFORMATION ON BILLING AND PRICING.  
\*ALL UNPAID BILLS RELEVY TO THE PROPERTY TAXES COME EVERY JULY. CALL FOR PAYMENT CUT OFF DATE.

**\*\*SEE THE BACK SIDE OF THIS NOTICE.\*\***



Solid Waste Dept.

#518-462-9616

#518-462-9617

## CITY OF RENSSELAER

Trash & Recycling pickup guidelines

Jun-23

City Garage

#518-462-5512

### **BULK PICK UP** (For bill paying customers only, NOT included in your trash rate.)

ANY NON HOUSEHOLD ITEMS CAN BE PLACED OUT WITH YOUR SCHEDULED TRASH NIGHT FOR PICK UP. THESE ITEMS WILL BE CHARGED IN ADDITION TO YOUR TRASH RATE AND REFLECTED ON YOUR SOLID WASTE BILL. THERE WILL BE **ONE CITY WIDE** BULK PICK UP EVENT YEARLY. (2023 SPRING EVENT DATES HAVE ENDED). BULK ITEMS IN TRASH BAGS ARE NOT CONSIDERED NORMAL HOUSE HOLD TRASH. ITEMS PLACED OUT AND LISTED AS "FREE" WILL BE PICKED UP AND CHARGED AS BULK. ALL BULK PICK UPS WILL BE CHARGED ACCORDINGLY. CHARGES ARE BASED ON SIZE AND ARE SUBJECT TO CHANGE. THE CITY GARAGE, LOCATED AT 25 WILLOW STREET, IS NOT A DROP OFF STATION.

### **PRICE LIST FOR BULK ITEMS:** ( IF THE ITEM PRICE IS NOT LISTED, CALL AHEAD FOR PRICE.)

CHAIR OR SMALL END TABLE- \$5.00	REFRIGERATORS/STOVES/AIR CONDITIONER- \$15.00
SOFA, MATTRESS, BOXSPRING, RECLINER- \$15.00	DOOR, WINDOW, TOILET -\$10.00
PROPANE TANKS- \$5.00	BABY CRIB- \$5.00
TIRES- \$5.00	KITCHEN TABLE WITH CHAIRS- \$20.00
5 X 7 RUGS- \$10.00	TV/COMPUTER MONITORS STANDARD CHARGE- \$30.00

CONSTRUCTION DEBRIS IS CHARGED BASED ON SIZE. ITEMS MUST BE BROKEN DOWN TO 4FT BAGGED OR BUNDLED. WE DO NOT TAKE BRICKS OR CONCRETE.

BULK PILES OF A MEASURABLE SIZE OF 2 FEET WIDE, 2 FEET HIGH, 2 FEET LONG - \$40.00  
BULK PILES OF A MEASURABLE SIZE OF 2 FEET WIDE, 2 FEET HIGH, 4 FEET LONG - \$100.00  
BULK PILES OF A MEASURABLE SIZE OF 4 FEET WIDE, 4 FEET HIGH, 8 FEET LONG - \$250.00  
PROPERTY CLEAN OUTS - \$500.00

CHARGES ARE BASED ON SIZE AND ARE SUBJECT TO CHANGE.

\* IT WILL BE THE HOMEOWNERS RESPONSIBILITY TO INFORM THEIR TENANTS OF THESE BULK RULES.  
ALL FEES/FINES STAY WITH THE PROPERTY. VIOLATORS MAY BE CHARGED \$1000.00 FOR UNSIGHTLY LITTERING.

### **ITEMS WE DO NOT PICK UP**

AUTO PARTS, BATTERIES  
CONCRETE/BRICKS  
HOUSEHOLD/POOL CHEMICALS  
MEDICAL WASTE/NEEDLES (NEEDLES THAT ARE PLACED IN A STRONG DUCK TAPED SEALED CONTAINER, LIKE A BLEACH BOTTLE, LABLED "DO NOT RECYLCE" CAN BE PLACE IN THE REGULAR TRASH.)  
HAZARDOUS WASTE ( GAS/OILS)  
HUMAN WASTE  
LIQUID PAINT (UNLESS DRIED OR SOAKED WITH CAT LITTER)



Solid Waste Dept.

#518-462-9616

#518-462-9617

## CITY OF RENSSELAER

Trash & Recycling pickup guidelines

City Garage

#518-462-5512

### HOLIDAYS 2022-2023 (Possible change on your trash pick up day)

\*\*\* PLEASE NOTE, IF A HOLIDAY FALLS ON A MONDAY, LEAF/BRUSH WILL NOT BE PICKED UP.

MEMORIAL DAY	MONDAY	5/29/2023	HOLIDAY/NO BRUSH
--------------	--------	-----------	------------------

INDEPENDANCE DAY	TUESDAY	7/4/2023	CHANGE OF PICKUP
------------------	---------	----------	------------------

Normal Tuesday pick up is Monday.

Normal Wednesday, Thursday, and Friday pick up remains the same.

LABOR DAY	MONDAY	9/4/2023	HOLIDAY/NO BRUSH
-----------	--------	----------	------------------

COLUMBUS DAY	MONDAY	10/9/2023	HOLIDAY/NO BRUSH
--------------	--------	-----------	------------------

VETERAN'S DAY	FRIDAY	11/10/2023	CHANGE OF PICKUP
---------------	--------	------------	------------------

Normal Tuesday pick up is Monday, Normal Wednesday pick up is Tuesday,  
Normal Thursday pick up is Wednesday & Normal Friday pick up is Thursday.

THANKSGIVING DAY	THURSDAY	11/23/2023	CHANGE OF PICKUP
------------------	----------	------------	------------------

Normal Tuesday pick up is Monday, Normal Wednesday pick up is Tuesday,  
Normal Thursday & Friday pick up is Wednesday.

DAY AFTER THANKSGIVING	FRIDAY	11/24/2023	CHANGE OF PICKUP
------------------------	--------	------------	------------------

Normal Tuesday pick up is Monday, Normal Wednesday pick up is Tuesday,  
Normal Thursday & Friday pick up is Wednesday.

CHRISTMAS DAY	MONDAY	12/25/2023	HOLIDAY/NO BRUSH
---------------	--------	------------	------------------

\*\*SEE THE BACK SIDE OF THIS NOTICE.\*\*



Solid Waste Dept.

#518-462-9616

#518-462-9617

## CITY OF RENSSELAER

Trash & Recycling pickup guidelines

City Garage

#518-462-5512

### INFORMATION TO THE PUBLIC

## FREE ELECTRONICS RECYCLING



\*Staples accept a wide range of electronic items for free recycling every day.

No purchase is necessary and they accept all brands of items regardless of where purchased.

\*Staples has a limit of 7 items per customer per day. Certain stores may, at the general manager's discretion, accept a larger number of items on a case-by-case basis.

\*Visit [www.staples.com](http://www.staples.com) or call Staples, located in East Greenbush NY, at 518-283-3039

# RECYCLE EVERY DAY

Free recycling for tech and more at your local Staples® s

### TECH

Adapters & cables  
Battery backup devices  
Cable/satellite receivers  
Calculators  
CD/DVD/Blu-ray discs & players  
Coffee brewers (less than 40 lb.)  
Computers  
Computer speakers  
Connected home devices  
Digital & video cameras  
Digital projectors  
Fax machines  
Flash drives  
Gaming consoles & controllers  
GPS devices  
Hard drives  
Headphones & earbuds  
Keyboards & mice  
Label makers  
Laminators  
Laptops  
MP3 players  
Monitors (CRT, LED / LCD, plasma)  
Phones  
Printers & multifunction devices  
Routers & modems

### TECH (CONT.)

Scanners  
Shredders  
Small servers  
Stereo receivers  
Stylus pens  
Tablets & eReaders  
Video streaming devices  
Webcams

### PRINTER CARTRIDGES

Ink cartridges  
Toner cartridges

### BATTERIES

Single-use alkaline **NEW**  
Non-rechargeable lithium **NEW**  
Rechargeable  
Nickel cadmium (Ni-Cd)  
Lithium ion (Li-Ion)  
Small sealed lead acid (SSLA/Pb)  
Nickel metal hydride (Ni-MH)  
Nickel zinc (Ni-ZN)

### WRITING TOOLS

Pens & markers **NEW**  
Mechanical pencils **NEW**

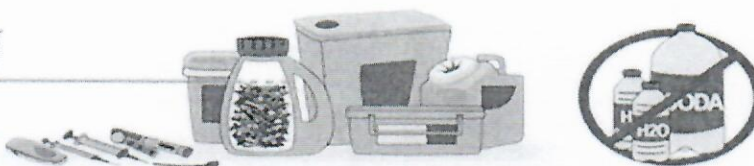
### WHAT CAN'T BE RECYCLED IN STORE

Air conditioners, appliances, floor-model printers & copiers, kitchen appliances, lamps or bulbs, large servers, large speakers, medical devices, records & record players, smoke detectors, TVs, vaporizers.

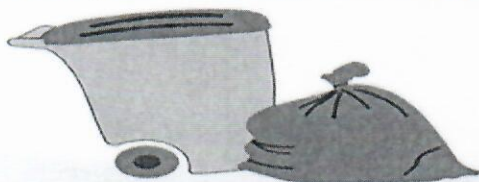
# What to Do with Used Sharps in New York.....

## 1) Put used sharps in a strong, plastic container

When the container is 3/4 full, put the lid on, seal it with duct tape, and label DO NOT RECYCLE.



## 2) Put the plastic container in the household trash - don't recycle!



Sharps should never be thrown loosely into the trash or toilet

Sharps that retract after use, or are very small, should be disposed of like all other sharps.

\*\*\*\*If you would like to bring your sealed container to a community sharps disposal program, all hospitals and nursing homes in the state of New York, with the exception of federal facilities, are mandated by law to accept properly contained home-generated sharps.



**SafeNeedleDisposal.org**

Be sharp about sharps.

800-643-1643